

## EGT 336, 338: Датчик комнатной температуры

### Каким образом уменьшается энергопотребление

Непосредственное измерение комнатной температуры для энергосберегающего управления системами HVAC и контроля энергопотребления.

### Область применения

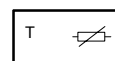
Для измерения комнатной температуры и настройки уставки для систем отопления и кондиционирования воздуха в сухих помещениях.

### Свойства

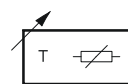
- Измерение комнатной температуры
- Комнатная панель управления с многофункциональным дизайном и различными вариантами цветов
- Устройство имеет прозрачную переднюю панель и вставляется в рамку с внутренним размером 55 x 55 мм
- Рамки заказываются как аксессуары

### Технические характеристики

- Измерительный элемент из тонкой никелевой пленки в соответствии с DIN IEC 43760
- Кабельный ввод сзади, встроенные клеммы для проводов 0,12...0,5 мм<sup>2</sup> (0,4...0,8 мм  $\varnothing$ )



Y04579



Y01841a

Тип	Номинальное значение при 0 °C	Настройка	Особенности	Измерительный диап. °C	Вес kg
<b>EGT 336 F101</b>	1000 $\Omega$	—	—	-20...60	0,1
<b>EGT 338 F101</b>	1000 $\Omega$	10 k $\Omega$	для flexotron 2) + DDC	-20...60	0,1
<b>EGT 338 F601</b>	1000 $\Omega$ 1)	$\pm 4$ K	для equitherm + RDT 7 .	-20...60	0,1

Значения сопротивления по Допуск при 0 °C	DIN 43760 $\pm 0,4$ K	Степень защиты	IP 30 (EN 60529)
Средний темп. коэффициент Саморазогрев	0,00618 K <sup>-1</sup> 0,17 K/mW	Схема подключения	
Врем. хар-ки в спокойном возд		EGT 336	<a href="#">A10516</a>
Время нечувствительности	50 с	EGT 338 F101	<a href="#">A10517</a>
Постоянная времени	12 мин	EGT 338 F601	<a href="#">A10518</a>
		Размерный чертеж	
		EGT 336	<a href="#">M10487</a>
		EGT 338	<a href="#">M10488</a>
		Инструкции по монтажу	
		EGT 336	P100001967
		EGT 338 F101	P100001968
		EGT 338 F601	P100002537
		Декларация материал. и экологичности	MD36.029

### Аксессуары

- 0940240 101** Одиночная рамка, включ. монтажную панель (для установки заподлицо, 10 шт.)
- 0940240 201** Двойная рамка, включ. монтажную панель (для установки заподлицо, 10 шт.)
- 0940240 301** Одиночная базовая панель (для установки на стену, 10 шт.)
- 0940240 401** Двойная базовая панель (для установки на стену, 10 шт.)
- 0940240 501** Одиночная кабельная крышка (для подключения с пола 10 шт.)
- 0940240 601** Двойная кабельная крышка (для подключения с пола 10 шт.)
- 0940240 701** Одиночная монтажная панель (для внешней рамки, 10 шт.)
- 0940240 801** Двойная монтажная панель (для внешней рамки, 10 шт.)
- 0949241 301** Прозрачная крышка (10 шт.)

- 1) 1000  $\Omega$  с ручкой настройки в центральном положении  
2) Не для flexotron 100

### Operation

The resistance of the nickel measuring resistor changes depending on the temperature. The temperature coefficient is always positive, i.e. the resistance increases as the temperature rises. Value table (DIN 43760).

EGT 338 F101:

A 10 k $\Omega$  potentiometer is also installed as well as the measuring resistor. The setpoint can be parameterised universally in combination with DDC or a flexotron controller.

EGT 338 F601:

A 47  $\Omega$  potentiometer is installed in series with the measuring resistor for changing the measurement by  $\pm 4$  K. The setpoint can be corrected with or without room temperature influence depending on whether an equitherm controller is connected.

### Engineering and fitting notes

The temperature sensor should not be exposed to direct sources of heat, the effects of radiation or draughts. There is an error of approx. 1 K with a temperature difference of 5 K between wall and air at a distance of approx. 1 m.

### Setpoint adjustment

Fixed setpoint setting.

A fixed individual room setpoint needs to be set in different application cases. After this has been done using the setpoint knob, the knob is removed.

The transparent cover of the EGT 338 (with opening for setpoint adjuster) is replaced with a closed transparent cover (accessory).

Setpoint correction limitation

With the EGT 338 F601, the rotation angle setpoint knob can be limited mechanically. The possible setpoint correction can be limited in this way. The full range of  $\pm 4$  K is enabled in the as-delivered condition. The procedure is described in installation instruction P100002537.

### Installation

The room temperature sensors are suitable for different types of installation.

Single installation (1 device):

Type of installation:	Recessed junction box	Accessories	Description / scope of delivery
Flush mounting	Suitable types, e.g.: D: Kaiser CH: AGRO F: Le Grand	094 0240101	Single frame, incl. mounting plate (Packing unit 10 pcs.)
Wall mounting	As required	094 0240301	Single baseplate (Packing unit 10 pcs.)
Wall mounting with connecting cable, surface-mounted	None	094 0240501	Single cable cover (Packing unit 10 pcs.)
Flush mounting with external frame	Suitable types, e.g.: D: Kaiser	094 0240701	Single mounting plate, (Packing unit 10 pcs.)

Double installation (2 devices, one beneath the other)

Type of installation:	Recessed junction box	Accessories	Description / scope of delivery
Flush mounting	Suitable types, e.g.: D: Kaiser CH: AGRO F: Le Grand	094 0240201	Double frame, incl. mounting plate (Packing unit 10 pcs.)
Wall mounting	As required	094 0240401	Double baseplate (Packing unit 10 pcs.)
Wall mounting with connecting cable, surface-mounted	None	094 0240601	Double cable cover (Packing unit 10 pcs.)
Flush mounting with external frame	Suitable types, e.g.: D: Kaiser	094 0240801	Double mounting plate, (Packing unit 10 pcs.)

**Use of different frames**

Since the device insert is separate from the frame, there are many different installation and frame selection options. This flexibility is realised by selecting the relevant accessory.

0940240 101 Single frame, incl. mounting plate

The mounting plate is screwed to a recessed junction box. The device insert is fitted to the frame and connected to the mounting plate by pushing it in.

0940240 201 Double frame, incl. mounting plate

Like single frame. However, 2 devices can be mounted beneath or next to each other using this frame.

0940240 301 Single baseplate

The baseplate can be screwed directly to the wall. The cabling also comes from the rear out of the wall in this case. The device insert is fitted to the baseplate by pushing it in.

0940240 401 Double baseplate

Like single baseplate. However, 2 devices can be mounted beneath or next to each other using this baseplate.

0940240 501 Single cable cover

0940240 601 Double cable cover

If the cabling to the baseplate is routed on the surface, this accessory is installed beneath the baseplate. The cable cover can be broken out in different places for leading the cable in.

094 0240701 Single mounting plate

094 0240801 Single mounting plate

For use with external frames. If external frames such as those made by light switch manufacturers are used, it must be ensured that they are mechanically in perfect working order.

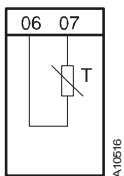
The mounting plate is screwed to a recessed junction box. The device insert is fitted to the frame and connected to the mounting plate by pushing it in.

**Additional technical data**

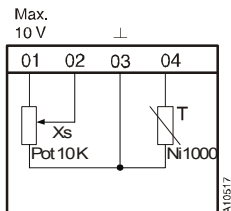
Complies with:	
EMC directive 2004/108/EC	EN 61000-6-1/ EN 61000-6-2 EN 61000-6-3/ EN 61000-6-4

**Wiring diagram**

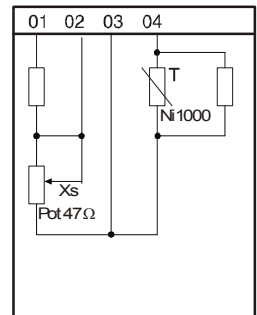
EGT 336



EGT 338 F101

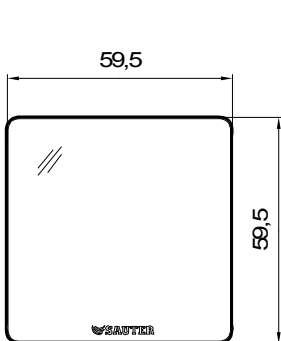


EGT 338 F601



**Dimension drawing**

EGT 336



EGT 338

